



Budget 2023

Eliminating Family Violence and Sexual Violence

Addressing gaps, improving outcomes, maintaining momentum



**Te Kāwanatanga
o Aotearoa**
New Zealand Government

Budget 2023

Eliminating Family Violence and Sexual Violence

Addressing gaps, improving outcomes, maintaining momentum

Budget 2023 Family Violence and Sexual Violence Package		
Sector	Number of Initiatives	Budget 2023 funding
Children and young people	3	\$18.38m
People with disabilities	2	\$9.53m
Māori	1	\$8.60m

Total: \$36.51 million of the \$73.48 million in Budget 2023 family violence and sexual violence funding will be across these three key sectors.

Budget 2023 invests **\$73.48 million in the family violence and sexual violence system**, with half going to initiatives to supporting disabled people, children and young people, and providing kaupapa Māori services.

This builds on investment of close to a billion dollars since 2018 to improve services and systems.

Government investment simultaneously shaped by and driving Te Aorerekura

Budget 2023 delivers the second family violence and sexual violence Budget package since **Te Aorerekura - the National Strategy for the Elimination of Family Violence and Sexual Violence**, and its 40-point Action Plan were jointly launched in December 2021.

The \$73.48 million Budget 2023 investment reinforces Te Aorerekura, maintaining and building on the momentum that the Strategy is creating.

It will achieve this by funding and delivering on Te Aorerekura priorities, and focusing on three main priorities:

- Learning and monitoring
- Increasing equity by addressing key service gaps
- Enabling community leadership.

What is Te Aorerekura and why is it so important?

Te Aorerekura - the National Strategy to Eliminate Family Violence and Sexual Violence, was launched in December 2021 to coordinate work across Government agencies and the community and NGOs, to end family violence and sexual violence.

It is a strength-based Strategy, grounded in te ao Māori and designed to achieve intergenerational change over 25 years. It focuses on the critical role of tangata whenua and community leadership in achieving change.

Alongside the Strategy, sits the Action Plan, with 40 actions to achieve six key Shifts:

Shift 1: Towards strength-based wellbeing

Shift 2: Towards mobilising communities

Shift 3: Towards skilled, culturally competent and sustainable workforces

Shift 4: Towards investment in primary prevention

Shift 5: Towards safe, accessible and integrated responses

Shift 6: Towards increased capacity for healing.

Budget 2023 – where it's focused

Addressing gaps, improving outcomes, maintaining momentum

Budgets demonstrate in fiscal terms where a government is placing its priorities. Budget 2023 confirms that progress to address family violence and sexual violence is a key focus. This set of initiatives invest in areas of need and where the most difference can be made at this time.

Eliminating family violence and sexual violence requires sustained focus and investment to achieve inter-generational change. There is no quick or easy solution, and because of the scale and complexity of the issues involved, it's not possible for a government to fund everything that it would want to fund at once. And that is why the journey, now guided by Te Aorerekura, has been backed by just short of a billion dollars in government funding since 2018.

Every year, the government brings a different emphasis to its funding – this year it's about addressing service gaps, improving outcomes, and maintaining the momentum that has been built by Te Aorerekura.

This year almost half of the Budget 2023 family violence and sexual violence funding package has been aimed at three key groups – disabled people, tamariki and rangatahi, and tangata whenua.

Where the money will go in Budget 2023

Budget 2023 builds on the investment of almost a billion over the past five years, to support the foundations for change and continue the delivery of Te Aorerekura – the National Strategy to Eliminate Family Violence and Sexual Violence.

The initiatives include:

- **\$18.38 million** over four years for building better support across the system for tamariki and rangatahi. This includes establishing advocates in eight Women's Refuges, better support for tamariki and rangatahi participating in the court system, and expanding family dispute resolution (FDR) practices to minimise harm to children.
- **\$9.53 million** over four years to step toward a twin-track approach to supporting disabled people. This will be done by increasing access to specialist supports through the Waitematā Safeguarding response and rolling out to at least one other location, while also supporting improved access to mainstream family violence and sexual violence services for disabled people.
- **\$8.60 million** over three years for kaupapa Māori specialist sexual violence services for whānau.
- **\$10.06 million** over four years for a multi-modal Family Violence Help Portal, which will provide access to online tools and services available nationwide 24/7 for people experiencing, using, or supporting those impacted by family violence.

Budget 2023

Eliminating Family Violence and Sexual Violence

Addressing gaps, improving outcomes, maintaining momentum

Budget 2023 invests **\$73.48 million in the family violence and sexual violence system**, with half going to initiatives for disabled people, children and young people, and tangata whenua. This builds on Government investment of close to \$1 billion to improve services and systems since 2018.

Overall, Budget 2023 will:



Increase equity by addressing key service gaps for Māori, disabled people, tamariki and rangatahi



Support strong foundations to keep delivering Te Aorerekura, the 25-year National Strategy to Eliminate Family Violence and Sexual Violence, through targeted, specific investment in learning and monitoring



Enable community leadership in the regions.

Budget 2023 funds and reinforces Te Aorerekura's priorities. It builds on last year's Budget, which focused on prevention and community-led solutions, and spans access to family violence programmes for victims/survivors, and users of violence. It covers community responses, and supports victims/survivors, improving their ability to get the help they need when they need it.

Funding breakdown across initiatives

	Initiative	Vote	Funding
Learning and monitoring	Building a monitoring, evaluation and learning function	Justice (Te Puna Aonui)	\$3.994m over 4 years
Increasing equity by addressing key service gaps	Kaupapa Māori specialist sexual violence services for whānau	Social Development	\$8.603m over 3 years
	Safeguarding adults at risk and disabled people from violence and abuse	Social Development	\$6.110m over 4 years
	Accessible family violence and sexual violence services for disabled people	Social Development	\$3.419m over 2 years
	Child advocates to support children in Women's Refuges	Social Development	\$5.997m over 4 years
	Family dispute resolution – child participation cost pressure	Justice	\$5.334m over 4 years
	Court support for tamariki and rangatahi witnesses in sexual violence proceedings	Oranga Tamariki	\$7.049m over 4 years
	Family violence help portal	Social Development	\$10.055m over 4 years
	Improved access to family violence programmes in court and the community	Courts Corrections	\$20.089m over 4 years \$0.909m over 4 years
Enabling community leadership	Enabling a multi-disciplinary family harm approach in Counties Manukau	Social Development	\$1.920m over 2 years

Total:
\$73.480m

Building a Monitoring, Evaluation, and Learning Function

Learning and monitoring

\$3.99 million over 4 years Vote: Justice, Te Puna Aonui

INITIATIVE

This initiative provides funding to establish a monitoring, evaluation and learning system that will enable collective accountability for the commitments set out in Te Aorerekura. It also supports diverse communities, specialist organisations and government to improve how Aotearoa New Zealand addresses family violence and sexual violence.

It will fund the establishment of an insights hub that will engage and amplify the voices of people and communities impacted by family violence and sexual violence with a collective approach to building evidence, monitoring change and sharing learning, and will support government's ability to effectively target its investment.

IMPACTS

- Enabling collective accountability for fulfilling the commitments of Te Aorerekura.
- Better use of public funds, reduced duplication of efforts, and the tracking of whole-of-government impact.
- Ensuring that investment in system change is effective and delivers value.
- Identifying, integrating, and validating evidence of what works, for whom, and in what contexts to support Te Puna Aonui agencies and communities in their efforts.
- Better understanding of the nature and impact of violence on Māori, tamariki and rangatahi, women and girls, and diverse communities to improve understanding of the barriers to seeking help, and how to meet complex needs.
- More coordinated insights for addressing the physical and mental health impacts of family violence and sexual violence.

- Enhancing cultural capability through supporting community-led and culturally responsive evidence initiatives, including kaupapa Māori approaches.
- Generate and use better data to improve life satisfaction for communities affected by family violence and sexual violence, through strengthening belonging and subjective wellbeing.
- Better understanding of appropriate and accessible services that support safety.

The impacts will lead to longer-term outcomes including:

- More accessible, appropriate, quality prevention, response, and healing services for people impacted by violence.
- Addressing the disproportionate impact of family violence and sexual violence on tangata whenua, Pacific peoples, and tamariki and rangatahi.

Kaupapa Māori Specialist Sexual Violence Services for Whānau

Increasing equity by addressing key service gaps

Shift 5: Towards safe, accessible and integrated responses

\$8.60 million over 3 years Vote: Social Development

INITIATIVE

This initiative will strengthen the delivery of kaupapa Māori specialist sexual violence services for victims/survivors, perpetrators and their whānau, to ensure more Māori affected by sexual violence can access the support they need to heal. Funding will expand the number of providers and increase the workforce delivering kaupapa Māori specialist sexual violence services.

This initiative will also evaluate kaupapa Māori specialist sexual violence services to determine their effectiveness to inform future investment, and will support delivery of Te Aorerekura, by delivering on Action 30: Develop a plan to fill the service gaps for sexual violence.

IMPACTS

- More people accessing help and support.
- Improved quality of life for people affected by sexual violence.
- People, families and whānau experience a reduction in sexual violence.
- Increased cultural connectedness and enhanced protective factors for whānau.
- Reduced strain on parents, whānau, and their support networks due to the impacts of sexual violence.

The impacts will lead to longer-term outcomes including:

- Improved safety and wellbeing for people, families and whānau, and communities.
- Increased family and whānau stability and a decrease in negative impacts on children.
- Reduction in sexual violence, including the intergenerational transmission of violence.
- Reduction in costs and pressures, including across the health care and sexual violence response systems.



Safeguarding Adults at Risk and Disabled People from Violence and Abuse

Increasing equity by addressing key service gaps

Shift 5: Towards safe, accessible and integrated responses

\$6.11 million over 4 years Vote: Social Development

INITIATIVE

This initiative aims to help people access services and support if they are experiencing (or are at risk of experiencing) family violence, sexual violence, abuse, or neglect. This funding will strengthen the Waitematā Safeguarding Adults at Risk Response, which recognises and responds to violence and abuse experienced by tāngata whaikaha Māori, deaf, disabled people and adults at risk. It will also enable the approach to be rolled out to at least one other location over the next two years.

This initiative will develop and expand the Safeguarding Framework and interagency safeguarding of adults from abuse approach (SAFA) to improve prevention, responses and reporting on forms of abuse, neglect or harm of vulnerable adults. It delivers Action 28 of Te Aorerekura: Implement safeguarding responses for disabled and vulnerable adults.

IMPACTS

- Greater access to specialist support for adults experiencing (or at risk of experiencing) family violence, sexual violence, abuse, or neglect.
- The Waitematā initiative will be consolidated and strengthened, enabling improved responses for more adults at risk.
- The cross-agency community-led model will be rolled out to at least one other location.
- Increased visibility and improved support for disabled people to ensure their needs are identified and understood, and mainstream agencies can facilitate specialist responses where required.
- Improved collaboration between all agencies, including a strong partnership between Te Whatu Ora and Whaikaha.

The impacts will lead to longer-term outcomes including:

- The disabled community having greater control over planning, with a strong oversight component and an independent voice.
- Complementary initiatives will build community resilience, led by communities to strengthen the overall outcomes.



Accessible Family Violence and Sexual Violence Services for Disabled People

Increasing equity by addressing key service gaps

Shift 5: Towards safe, accessible and integrated responses

\$3.42 million over 2 years Vote: Social Development

INITIATIVE

This initiative provides funding to establish a time-limited, contestable fund to support MSD-funded family violence and sexual violence providers to better meet the accessibility needs of disabled people and tāngata whaikaha Māori. The fund will support providers to receive an independent, specialist assessment of the accessibility of their organisation and services, and a plan for recommended improvements.

Funding will be provided towards implementing the plan, enabling providers to respond more appropriately to the disabled community. This funding will also enable the Ministry of Social Development to undertake a current state analysis of the mainstream family violence and sexual violence providers it funds to gain a deeper understanding of common accessibility issues.

This initiative supports delivery of Te Aorerekura by supporting the delivery of Action 29: Develop a plan to fill the service gaps for family violence, and Action 30: Develop a plan to fill the service gaps for sexual violence.

IMPACTS

- More disabled people and tāngata whaikaha Māori can access help and support.
- Family violence and sexual violence providers can take action to increase the accessibility of their services for disabled people and tāngata whaikaha Māori.
- Improved quality of life for disabled people and tāngata whaikaha Māori affected by violence.
- Disabled people and tāngata whaikaha Māori experience increased levels of personal safety.
- Disabled people and tāngata whaikaha Māori experience a reduction in family violence and sexual violence.
- Reduced stress and pressure on family and whānau, friends, and support people of disabled people and tāngata whaikaha Māori who experience violence.

The impacts will lead to longer-term outcomes including:

- More disabled people and tāngata whaikaha Māori experience improved overall wellbeing.
- Increased family and whānau stability and decreased negative impacts on children.
- Mainstream family violence and sexual violence services are more accessible for disabled people and tāngata whaikaha Māori.
- Reduction in costs and pressures, including across the health care, and the family violence and sexual violence response, systems.
- Reduction in family violence and sexual violence, including the intergenerational transmission of violence.

Child Advocates to Support Children in Women's Refuge

Increasing equity by addressing key service gaps

Shift 3: Towards skilled, culturally competent and sustainable workforces

Funding amount: \$6.00 million over 4 years
Vote: Social Development

INITIATIVE

This initiative will maintain the Child Advocates pilot which supports children in eight Women's Refuge sites across Aotearoa New Zealand. Funding will ensure that children moving through these Women's Refuge sites are able access specialist, child-focused support, which enables them to articulate their own needs for support and healing.

The initiative will also provide support for the Child Advocates programme to ensure quality and consistency of programme delivery, as well as an evaluation of the programme's effectiveness, which will inform any future investment.

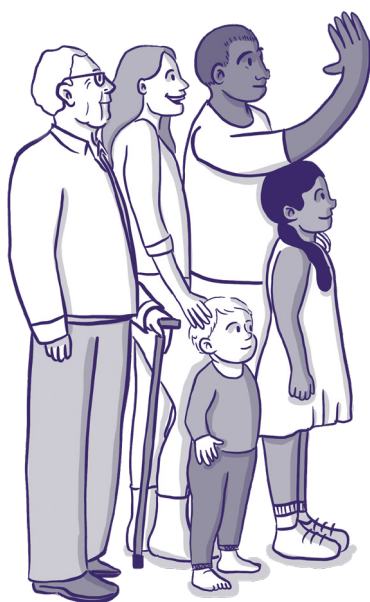
This initiative supports delivery of Te Aorerekura Action 14: Build the specialist workforces for children, and Action 29: Develop a plan to fill the service gaps for family violence.

IMPACTS

- Children receive timely specialist support in response to family violence related trauma.
- Children access advocacy as they navigate adult spaces, including the health, justice, and education systems.
- Children have improved coping mechanisms and understanding of family violence-related trauma.
- Children experience increased levels of personal and community safety.
- Children establish healthy relationships with peers and whānau (including parents).
- Children have a positive experience of seeking family violence support, increasing the chances of seeking help if required in the future.

The impacts will lead to longer-term outcomes including:

- More children experience improved overall wellbeing.
- Improved safety and wellbeing for children, families and whānau, and communities.
- Increased family and whānau stability and decreased negative impacts on children.
- Reduction in family violence and sexual violence, including the intergenerational transmission of violence.
- Reduction in costs and pressures, including across the health care and family violence response systems.



Family Dispute Resolution – Child Participation Cost Pressures

Increasing equity by addressing key service gaps

Shift 3: Towards skilled, culturally competent and sustainable workforces

\$5.33 million over 4 years
Vote: Justice

INITIATIVE

This initiative provides funding to support the Family Dispute Resolution (FDR) service in complying with its new legislative obligation under Section 11 of the FDR Act 2013, requiring it to provide children, who are the subject of a dispute, with an opportunity to participate in decisions affecting them. The funding also supports the development of best practice guidance, policies, and tools for supporting and protecting the children of parents who are accessing mediation.

This initiative supports delivery of Te Aorerekura by supporting the delivery of Action 14: Build the specialist workforces for children.

IMPACTS

- Enable tamariki and rangatahi to contribute safely, in decisions about their own care arrangements.
- Keep children safe from harm and minimises the impact of parental conflict on children.

The impacts will lead to longer-term outcomes including:

- Support for out-of-court resolution.
- Improved quality of mediation outcomes for whānau.
- Improved safety and wellbeing for families, whānau and tamariki.
- Increased likelihood that care arrangements will endure.



Court Support for Tamariki and Rangatahi Witnesses in Sexual Violence Proceedings

Increasing equity by addressing key service gaps

Shift 5: Towards safe, accessible and integrated responses

Funding amount: \$7.05 million over 4 years
Vote: Oranga Tamariki

INITIATIVE

This initiative provides funding to establish a dedicated psycho-social court support service for tamariki and rangatahi witnesses (also referred to as victims/survivors of sexual violence) in sexual violence proceedings across Aotearoa.

The psycho-social court support service will address the emotional, mental, spiritual, and social needs of tamariki and rangatahi aged 18 years and younger, and within the context of this, support their primary caregivers and whānau. The initiative aims to reduce retraumatisation, better support the healing of young victims / survivors of sexual violence and reduce intergenerational effects of sexual violence.

This initiative will complement the Ministry of Social Development's psycho-social court support service for adult victims/survivors (18 years and older) of sexual violence who are going through the criminal justice system.

This initiative contributes to Shift Five of Te Aorerekura: Towards safe accessible, and integrated responses, by supporting Action 27: Develop new practice guidelines for supporting participants in court proceedings, and Action 30: Develop a plan to fill the service gaps for sexual violence). It will also contribute to Shift Three, Action 14 of Te Aorerekura: to build the specialist workforces for children.

IMPACTS

This psycho-social support service addresses a known gap in sexual violence proceedings. Psycho-social support has been shown to reduce trauma and improve recovery. This initiative aims to provide support to lessen the impacts of sexual violence on victims/survivors of sexual violence and minimise flow-on costs to individuals, whānau and wider society. We anticipate key benefits for tamariki and rangatahi accessing this psycho-social support service to include:

- Culturally responsive support that will reduce trauma, improve recovery and support wellbeing through the court process.
- Reduced secondary victimisation from participating in the criminal justice system.
- Reduced risk of sexual revictimisation (being victims of sexual violence later in life).
- Reduced intergenerational harm from sexual violence.



Family Violence Help Portal

Increasing equity by addressing key service gaps

Shift 3: Towards skilled, culturally competent and sustainable workforces

\$10.06 million over 4 years Vote: Social Development

INITIATIVE

This initiative provides funding to ensure that New Zealanders have access to family violence online help tools which are available nationwide, 24/7 for people experiencing, using, or supporting those impacted by family violence.

This investment guarantees the continued operation of these family violence online help tools while work continues to improve the scope and quality of these tools and services to make them relevant for specific audiences.

This initiative supports delivery of Te Aorerekura by delivering on Action 12: Build tools for communities and informal helpers, and contributes to Action 29: Develop a plan to fill the service gaps for family violence.

IMPACTS

- More people access help and support.
- People, families and whānau experience a reduction in family violence.
- Reduced strain on parents, whānau and their support networks from the impacts of family violence.
- Reduced demand for acute mental health services for people experiencing violence.
- Less pressure on family violence service providers so staff can rest and are able to focus on high-risk or complex cases.
- Improved quality of life for people affected by family violence.

The impacts will lead to longer-term outcomes including:

- More people, families and whānau, and communities experience improved overall wellbeing.
- Reduction in family violence and sexual violence, including the intergenerational transmission of violence.
- Reduction in costs and pressures, including across the health care and family violence response systems.
- More people, families and whānau have positive, loving relationships and feel connected to their communities.



Improved Access to Family Violence Programmes in Court and the Community

Increasing equity by addressing key service gaps

Shift 5: Towards safe, accessible and integrated responses

\$21.00 million over 4 years **Vote: Courts, Corrections**

INITIATIVE

This initiative provides funding for the Ministry of Justice and the Department of Corrections to expand access to family violence programmes for victims/survivors, for users of violence who are participating in family violence court proceedings, and those serving sentences in the community for family violence offences.

This initiative will help to address inequities in access to services as well as supporting service providers to be more flexible and holistic in the delivery of their services.

This initiative supports the delivery of Te Aorerekura by delivering of Action 27: develop new practice guidelines for supporting participants in court proceedings. It also supports the implementation of the Social Sector Commissioning Principles.

IMPACTS

- More court participants can access family violence programmes and services earlier in proceedings or at times where they may be at high risk.
- People serving community-based sentences for family violence offences can access more holistic, wrap-around support from providers delivering family violence services.
- Providers are better supported to be flexible in their service delivery and respond to the needs of programme participants.
- Victims/survivors affected by family violence are safer and feel better supported during court proceedings and afterwards.
- Users of violence are supported to change their behaviour and integrate safely back into the community following family violence offending.
- Reduced pressure on service providers to absorb the costs of delivering increasingly responsive services.
- Individuals and their whānau develop the tools to have safe, healthy, and strong relationships, and are better placed to prioritise their wellbeing and that of their children.



A Multi-Disciplinary Family Harm Approach in Counties Manukau

Enabling community leadership

Shift 1: Towards strength-based wellbeing

Funding amount: \$1.92 million over 2 years
Vote: Social Development

INITIATIVE

This initiative provides funding to support non-government organisations' (NGOs) participation in the Multi-Disciplinary Cross Agency Team (MDCAT) in Counties Manukau.

This initiative continues to fund eight full-time positions from specialist NGOs, who operate as frontline kaimahi to work alongside government agencies to develop joint response plans and engage with families and whānau to understand their needs and support them into services.

Specialist services currently engaged in the MDCAT approach include kaupapa Māori, Pasifika, those working with users of violence, and child-focused and disability support services. Support for whānau through MDCAT can include counselling and social work, and support to address other issues such as housing, mental health, and addiction.

This initiative supports delivery of Te Aorerekura by delivering on Action 2: Agencies integrate community-led responses.

IMPACTS

- More people accessing help and support.
- People, families and whānau experience a reduction in family violence.
- Reduced strain on parents, whānau and their support networks due to the impacts of family violence.
- Reduced demand for acute mental health services for people experiencing violence.
- Reduced pressure on family violence service providers so that staff are able to rest and can focus on high-risk or complex cases.
- Improved quality of life for people affected by family violence.

The impacts will lead to longer-term outcomes including:

- Improved wellbeing for more people, families and whānau, and communities.
- Reduction in family violence and sexual violence, including the intergenerational transmission of violence.
- Reduction in costs and pressures, including across the health care and the family violence response system.
- More people, families and whānau have positive, loving relationships and feel connected to their communities.



